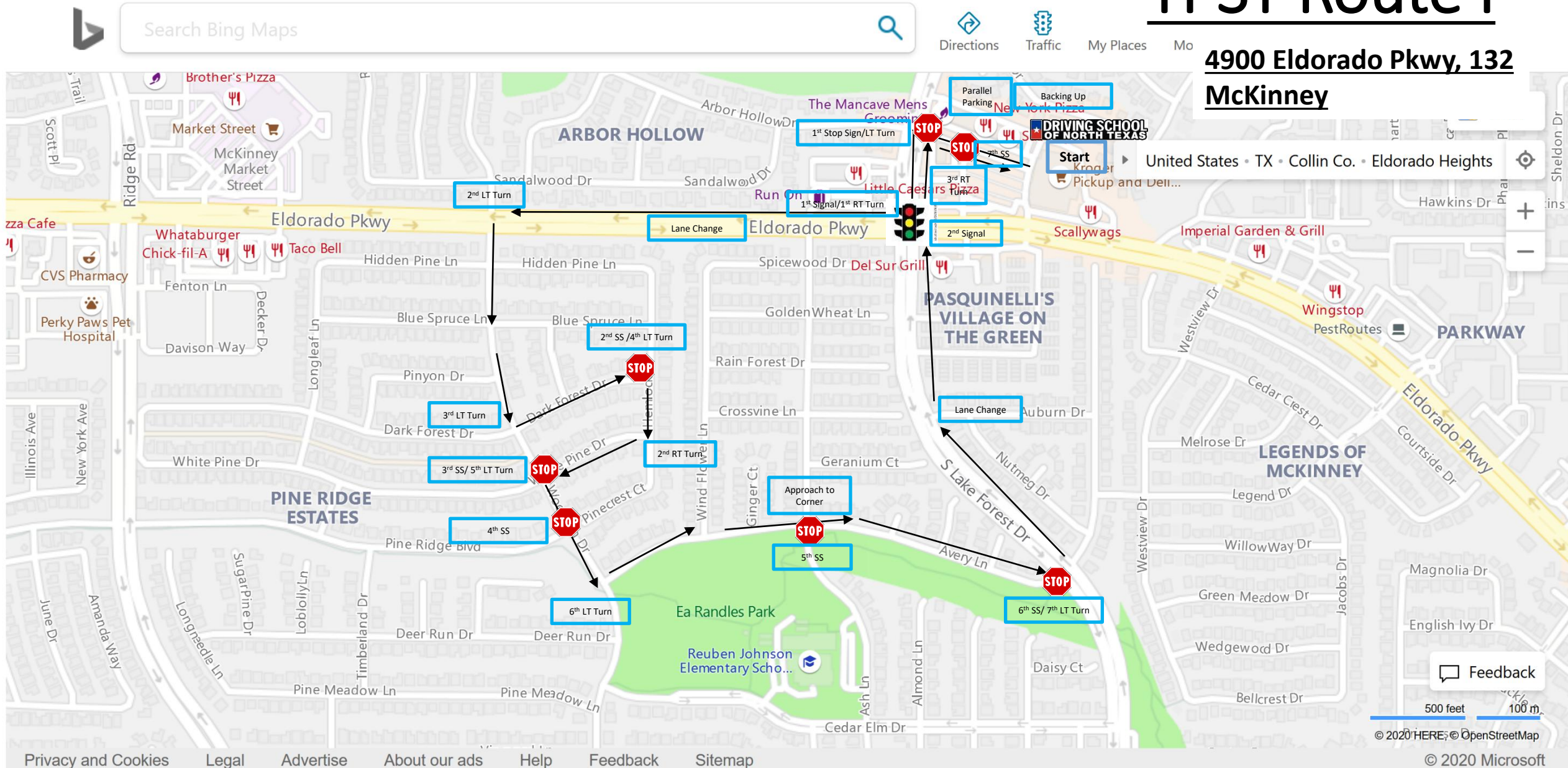
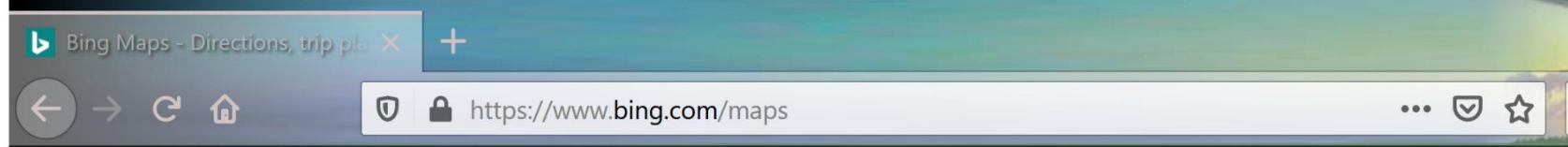


# DSNT McKinney TPST Route I

**4900 Eldorado Pkwy, 132  
McKinney**



# Driving School of North Texas

## TPST Drive Route 1-McKinney

1. Parallel Parking (in parking lot)
2. Quick Stop (in parking lot)
3. Backing 60 ft (in parking lot)
4. 1<sup>st</sup> Stop Sign/1<sup>st</sup> Lt Turn (Lake Forest)
5. 1<sup>st</sup> Signal/1<sup>st</sup> Right Turn (Eldorado Pkwy)
6. 2<sup>nd</sup> Lt Turn (Woodson Dr)
7. 3<sup>rd</sup> Lt Turn (Dark Forest Dr)
8. 2<sup>nd</sup> Stop Sign/2<sup>nd</sup> Right Turn (Hemlock Ln)
9. 3<sup>rd</sup> Rt Turn (White Pine Dr)
10. 3<sup>rd</sup> Stop Sign/4<sup>th</sup> Lt Turn (Woodson Dr)
11. 4<sup>th</sup> Stop Sign (Woodson Dr/Pine Ridge Blvd)
12. 5<sup>th</sup> Lt Turn (Avery Ln)
13. 5<sup>th</sup> Stop Sign (Avery Ln)
14. Approach to Corner (Ash Ln)
15. 6<sup>th</sup> Stop Sign/6<sup>th</sup> Lt Turn (S Lake Forest Dr)
16. Lane Change
17. 2<sup>nd</sup> Signal (Eldorado Pkwy)
18. 4<sup>th</sup> Right Turn (into parking lot)
19. 7<sup>th</sup> Stop Sign (in parking lot)

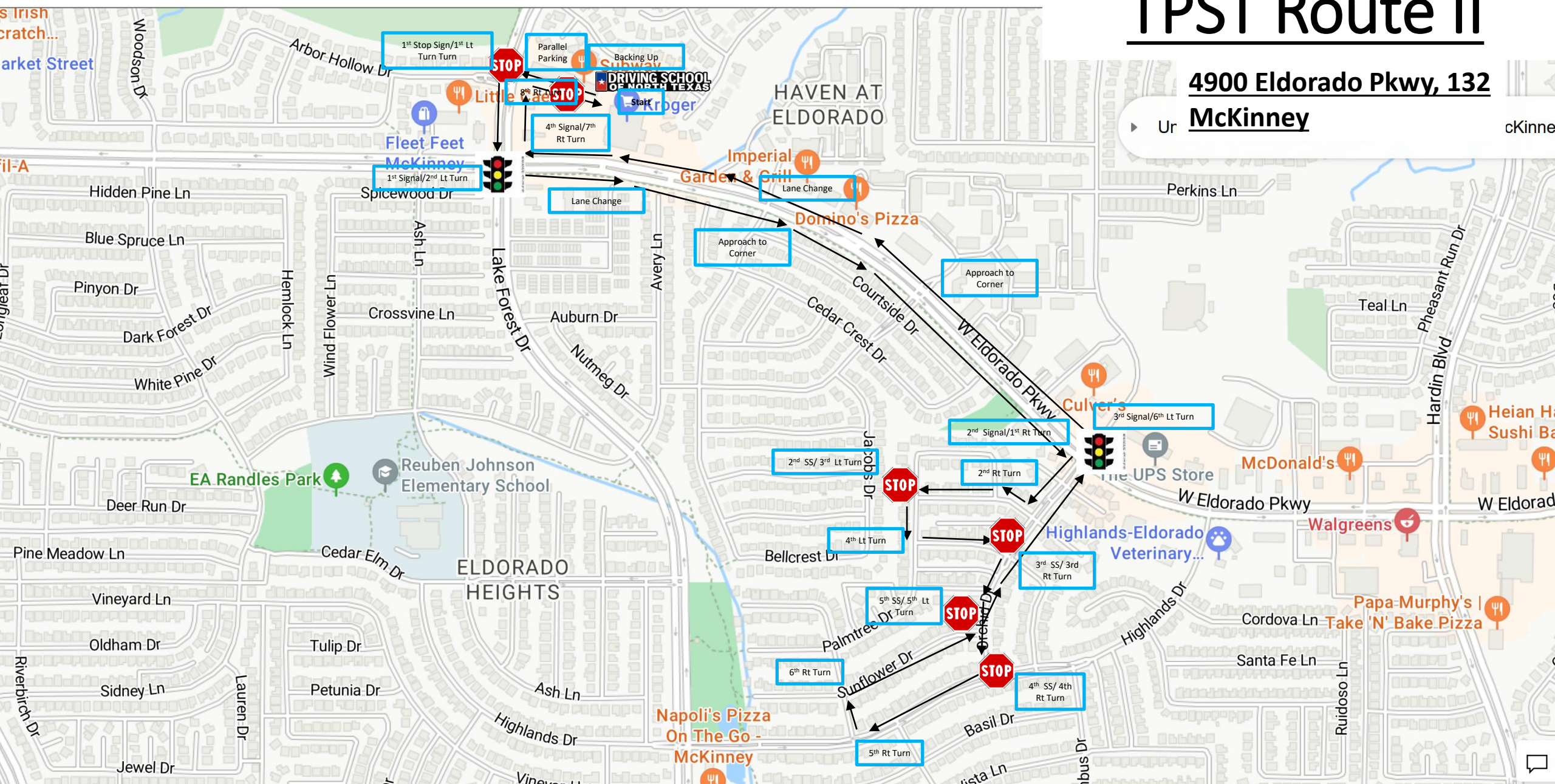


# DSNT McKinney

## TPST Route II

4900 Eldorado Pkwy, 132

McKinney



# Driving School of North Texas

## TPST Drive Route II-McKinney

1. Parallel Parking (in parking lot)
2. Quick Stop (in parking lot)
3. Backing 60 ft (in parking lot)
4. 1<sup>st</sup> Stop Sign/1<sup>st</sup> Lt Turn (Lake Forest)
5. 1<sup>st</sup> Signal/2<sup>nd</sup> Lt Turn (Eldorado Pkwy)
6. Lane Change
7. Approach to Corner
8. 2<sup>nd</sup> Signal/1<sup>st</sup> Right Turn (Orchid Dr)
9. 2<sup>nd</sup> Right Turn (English Ivy Dr)
10. 2<sup>nd</sup> Stop Sign/3<sup>rd</sup> Lt Turn (Palmtree Dr)
11. 4<sup>th</sup> Lt Turn (Honeysuckle Dr)
12. 3<sup>rd</sup> Stop Sign/3<sup>rd</sup> Right Turn (Orchid Dr)
13. 4<sup>th</sup> Stop Sign/4<sup>th</sup> Right Turn (Highlands Dr)
14. 5<sup>th</sup> Right Turn (Cactus Dr)
15. 6<sup>th</sup> Right Turn (Sunflower Dr)
16. 5<sup>th</sup> Stop Sign/5<sup>th</sup> Lt Turn (Orchid Dr)
17. 3<sup>rd</sup> Signal/6<sup>th</sup> Lt Turn (Eldorado Pkwy)
18. Approach to Corner
19. Lane Change
20. 4<sup>th</sup> Signal/7<sup>th</sup> Right Turn (Lake Forest)
21. 8<sup>th</sup> Right Turn